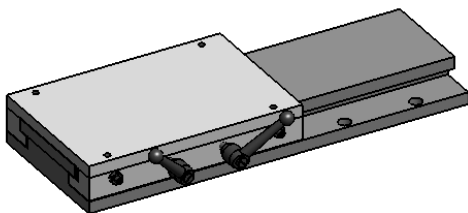
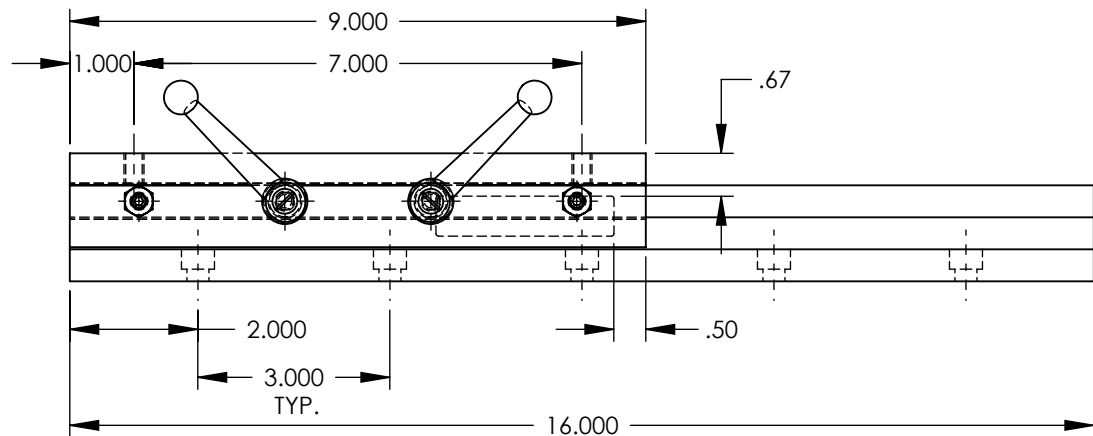
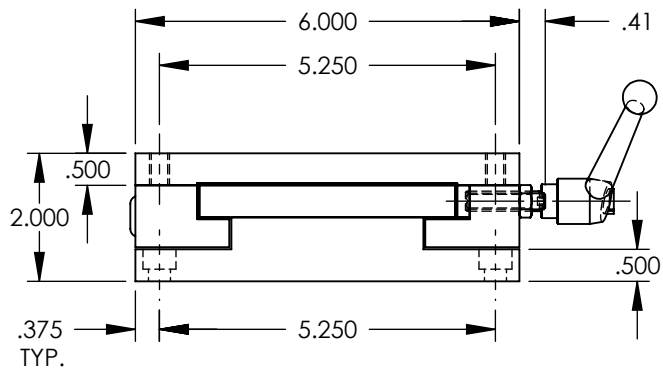
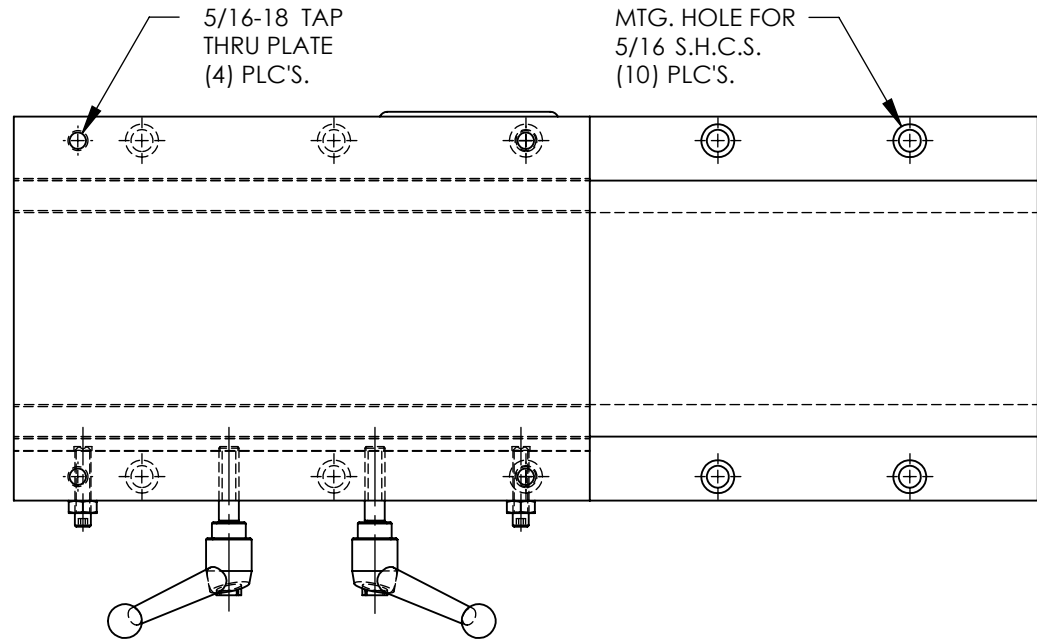


| DET. | QTY. | DESCRIPTION |
|------|------|---|
| ASM | 1 | SW06-BL16 SLIDE BASE |
| ASM | 1 | SW06-SL09 SLIDE SADDLE WITH LOCK HANDLES |
| \$02 | 2 | ADJUSTABLE HANDLE , KHB-62, 5/16-18 THREAD x 1.18 LG. |

| REV. | REVISION DESCRIPTION | DATE | APPROVED |
|------|----------------------|------|----------|
|------|----------------------|------|----------|



MODEL NAME: Gen2 SLIDE

| | | | | | | |
|---|-----------------------------|----------|----------------------------------|----------|-------------------|--------------|
| PROPRIETARY AND CONFIDENTIAL THE INFORMATION CONTAINED IN THIS DRAWING IS THE SOLE PROPERTY OF AUTOMATED INDUSTRIAL MOTION. ANY REPRODUCTION IN PART OR AS A WHOLE WITHOUT THE WRITTEN PERMISSION OF AUTOMATED INDUSTRIAL MOTION IS PROHIBITED. | NAME | DATE | DURA-BOND SLIDE TITLE: | | | |
| | DRAWN | JMW | | | 06/08/11 | GEN II SLIDE |
| | CHECKED | | | SIZE | DWG. NO. | |
| | ENG APPR. | Wierengo | 06/15/11 | A | SW06-SL09-BL16-LH | - |
| MATERIAL | UNLESS OTHERWISE SPECIFIED: | | SCALE: NONE | | | |
| ASSEMBLY | DIMENSIONS ARE IN INCHES | | WEIGHT: 43.2 lbs. | | | |
| HARDEN | TOLERANCES: | | SHEET 1 OF 1 | | | |
| FINISH | ANGULAR: MACH ± 1/2 DEGREE | | | | | |
| | TWO PLACE DECIMAL ±.010 | | | | | |
| | THREE PLACE DECIMAL ±.005 | | | | | |
| | FOUR PLACE DECIMAL ±.0005 | | | | | |